

低音革胡

春江花月夜

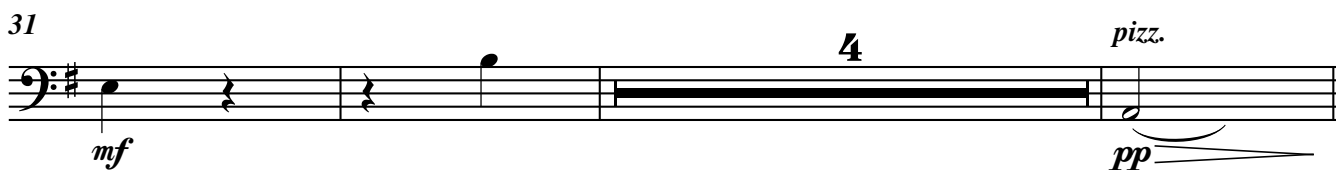
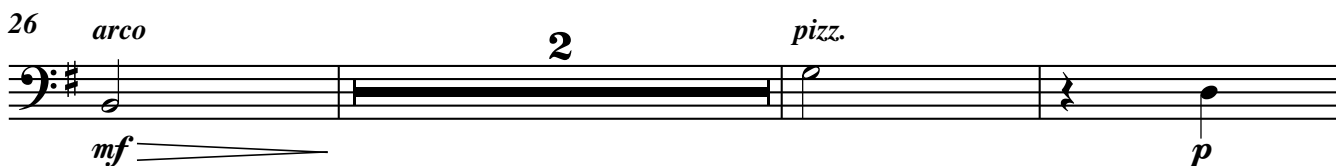
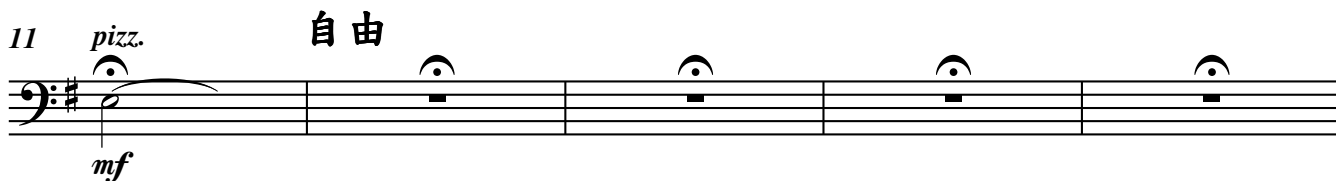
琵琶古曲

秦鵬章、羅忠鎔 編配

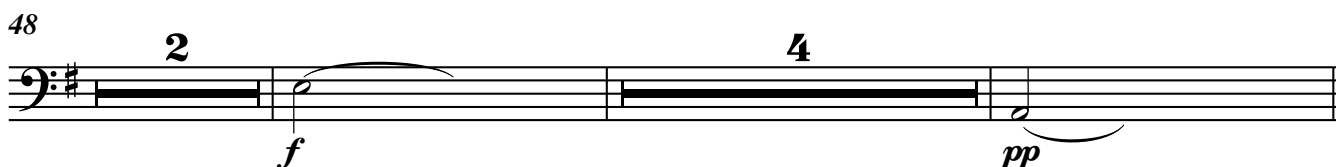
【一】江樓鐘鼓

♩ = 20

A tempo



【二】月上東山



春江花月夜 -- 低音革胡

2

56 **【三】花影層疊**

Musical staff for measure 56, marked with a bass clef and a key signature of one sharp (F#). The measure contains a half note with a fermata, followed by a whole rest. Above the staff, a '2' indicates a two-measure phrase. The measure ends with a pizzicato (pizz.) instruction and a mezzo-forte (mf) dynamic marking.

61

Musical staff for measure 61, marked with a bass clef and a key signature of one sharp (F#). The measure contains a half note with a fermata, followed by a whole rest. Above the staff, a '4' indicates a four-measure phrase. The measure ends with a ritardando (rit.) instruction.

68 **A tempo**

Musical staff for measure 68, marked with a bass clef and a key signature of one sharp (F#). The measure starts with a mezzo-forte (mf) dynamic marking and an arco instruction. It contains a sequence of eighth notes, followed by a whole rest. The measure ends with a hairpin crescendo symbol.

72

Musical staff for measure 72, marked with a bass clef and a key signature of one sharp (F#). The measure starts with a pizzicato (pizz.) instruction and a mezzo-forte (mf) dynamic marking. It contains a quarter note, followed by a whole rest. Above the staff, the Chinese characters '稍慢' (slightly slower) and a '2' indicate a two-measure phrase. The measure ends with a pianissimo (pp) dynamic marking.

77 **【四】水雲深際** 稍慢 $\text{♩} = 36$

Musical staff for measure 77, marked with a bass clef and a key signature of one sharp (F#). The measure starts with a mezzo-forte (mf) dynamic marking and a tempo marking of $\text{♩} = 36$. It contains a half note with a fermata, followed by a whole rest. Above the staff, a '10' indicates a ten-measure phrase. The measure ends with an arco instruction and a forte (f) dynamic marking.

92

Musical staff for measure 92, marked with a bass clef and a key signature of one sharp (F#). The measure starts with a pizzicato (pizz.) instruction and a mezzo-forte (mf) dynamic marking. It contains a quarter note, followed by a whole rest. Above the staff, an '8' indicates an eight-measure phrase. The measure ends with an arco instruction, a mezzo-forte (mf) dynamic marking with a poco crescendo (poco cresc.) instruction, an accel. instruction, and a pizzicato (pizz.) instruction leading to a fortissimo (ff) dynamic marking.

105 $\text{♩} = 48$

Musical staff for measure 105, marked with a bass clef and a key signature of one sharp (F#). The measure contains a half note with a fermata, followed by a whole rest. The tempo marking $\text{♩} = 48$ is shown above the staff.

109

Musical staff for measure 109, marked with a bass clef and a key signature of one sharp (F#). The measure starts with a mezzo-forte (mf) dynamic marking. It contains a half note with a fermata, followed by a whole rest. Above the staff, the Chinese characters '稍慢' (slightly slower) and a '2' indicate a two-measure phrase. The measure ends with a pianissimo (pp) dynamic marking.

春江花月夜 -- 低音革胡

114 **【五】漁歌晚唱** 稍慢、自由 $\text{♩} = 40 - 48$
arco

118

126 逐漸稍快

132

139 突快 $\text{♩} = 78$ *pizz.* *accel.* *arco*

143 *pizz.* *arco*

147 $\text{♩} = 84$

151 *rit.* $\text{♩} = 40$ *pizz.*

春江花月夜 -- 低音革胡

4

【六】洄瀾拍岸

155 慢起 ♩ = 32 - 96

5 Presto ♩ = 144 2 *pizz.*
ff

165

173 *arco* *rit.* ♩ = 40 *pizz.* 2 *mf* *ff* *pp*

【七】欸乃歸舟

179 悠慢 ♩ = 32

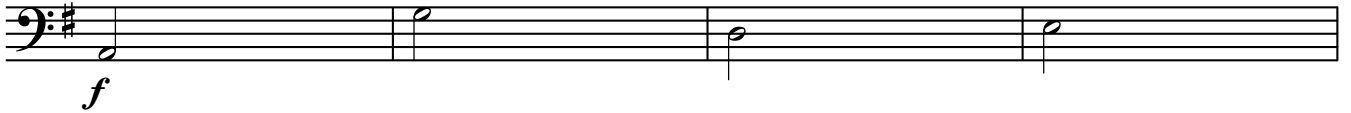
7 poco accel. 3 ♩ = 48 *pizz.* *mp cresc.*

191 *poco a poco*

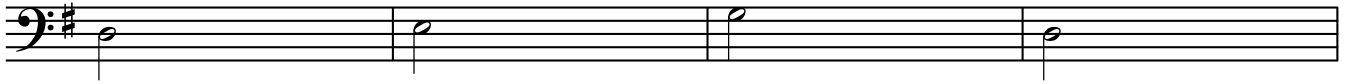
195

199

203 ♩ = 96 - 144



207



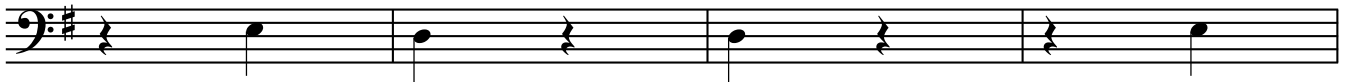
211



216 轉慢 ♩ = 40

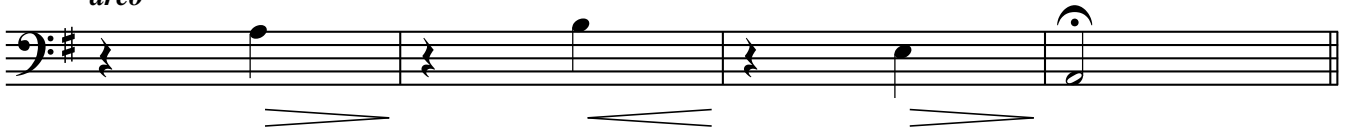


220



224 arco

(延長至等 rit. 止)

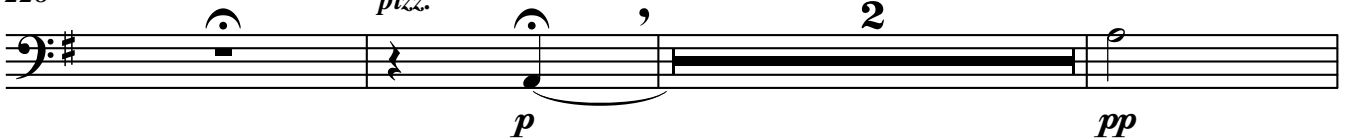


【八】尾聲

228 自由

pizz.

♩ = 56



233 arco

molto rit. . .

pizz.

