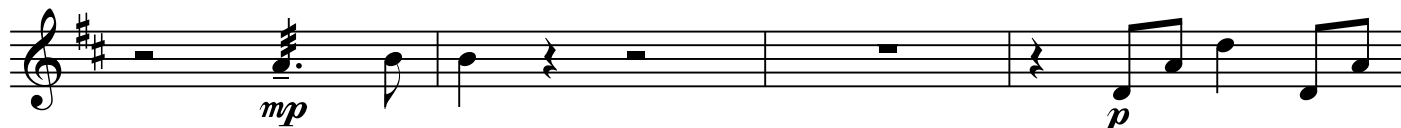


23



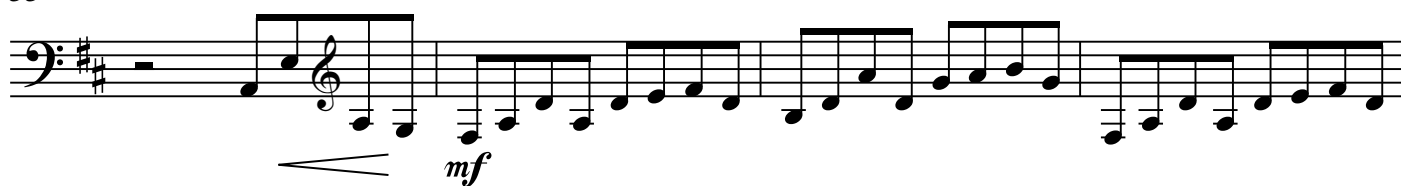
27



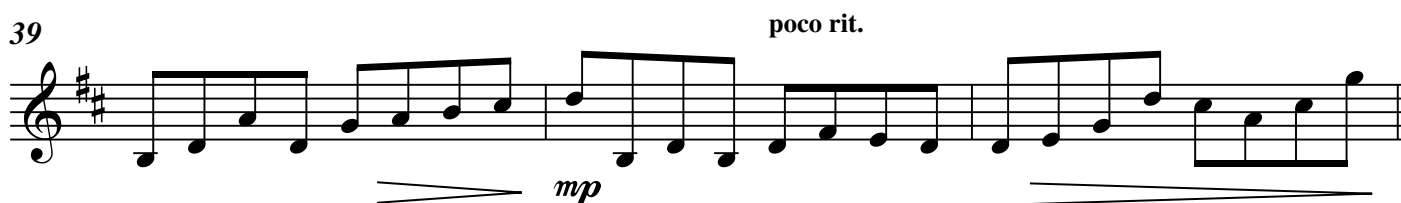
31



35



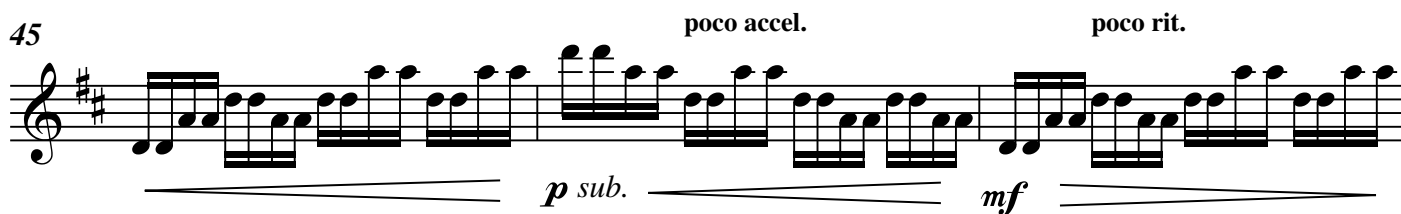
39



42



45



48



51 (♩ = 76) poco rit. . . . (♩ = 68)

54 poco rit. (♩ = 66)

58

62 (♩ = 68)

66 poco accel. rit. . . . 起伏地 poco accel.

69 poco rit. poco accel. poco rit.

72 poco a poco accel. . . . (♩ = 78)

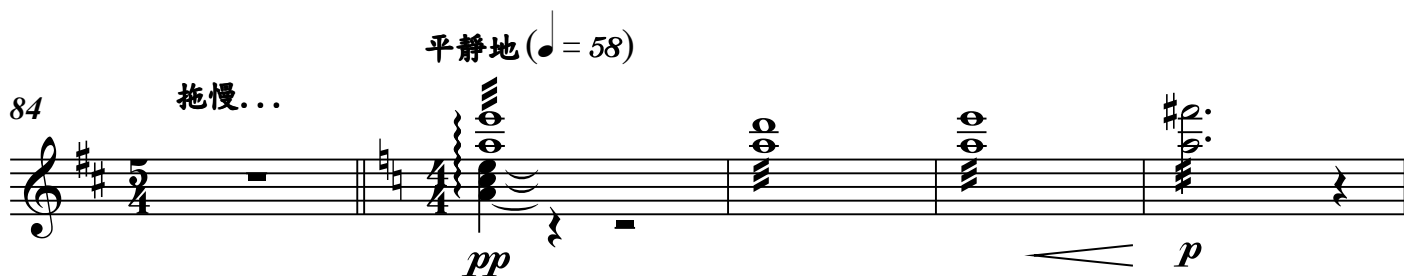
75 rit. . . . 流動地 (♩ = 66)

79 poco rit.



mp

84 拖慢... 平靜地 (♩ = 58)



pp p

89 rit. . . .



mp